

### Specifications

| Model                                  | Z-80/60     |             |
|--|-------------|-------------|
| Measurements                           | US          | Metric      |
| Working height maximum*                | 84 ft       | 25.77 m     |
| Platform height maximum                | 78 ft       | 23.77 m     |
| Horizontal reach maximum               | 60 ft       | 18.29 m     |
| Up and over clearance maximum          | 29 ft       |             |
| Below ground reach                     | 15 ft 10 in | 4.83 m      |
| <b>A</b> Platform length - 8 ft / 6 ft | 3ft/2ft 6in | 0.91m/0.76m |
| <b>B</b> Platform width - 8 ft / 6 ft  | 8ft/6ft     | 2.44m/1.83m |
| <b>C</b> Height - stowed               | 9 ft 10 in  | 3.00 m      |
| <b>D</b> Length - stowed               | 37 ft       | 11.27 m     |
| <b>E</b> Length - transport            | 37 ft       | 11.27 m     |
| <b>F</b> Width                         | 8 ft 2 in   | 2.49 m      |
| <b>G</b> Wheelbase                     | 9 ft 4 in   | 2.85 m      |
| <b>H</b> Ground clearance - center     | 12 in       | 0.30 m      |

### Productivity

|                                  |                      |           |
|----------------------------------|----------------------|-----------|
| Lift capacity                    | 500 lbs              | 227 kg    |
| Platform rotation                | 160°                 |           |
| Vertical jib rotation            | 135°                 |           |
| Turntable rotation               | 360° continuous      |           |
| Turntable tailswing - riser up   | 3 ft 10 in           | 1.17 m    |
| Turntable tailswing - riser down | 7 ft 4 in            | 2.24 m    |
| Drive speed - stowed             | 3.0 mph              | 4.83 km/h |
| Drive speed - raised**           | 0.68 mph             | 1.1 km/h  |
| Lift speed to full height        | 76 sec               |           |
| Gradeability - 2WD - stowed***   | 30%                  |           |
| Gradeability - 4WD - stowed***   | 45%                  |           |
| Turning radius - 2WS inside      | 14 ft 6 in           | 4.42 m    |
| Turning radius - 2WS outside     | 24 ft 6 in           | 7.47 m    |
| Turning radius - 4WS inside      | 7 ft                 | 2.13 m    |
| Turning radius - 4WS outside     | 15 ft                | 4.57 m    |
| Controls                         | 12 V DC proportional |           |
| Tires                            | 18-625 NHS           |           |

### Power

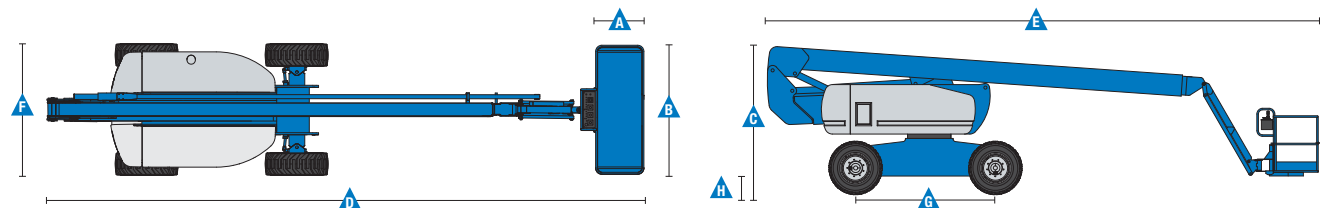
|                                       |   |       |
|---------------------------------------|---|-------|
| Power source                          | Deutz TD 2011 L04i 4 cylinder diesel 74 hp (55 kW)<br>Perkins 804D-33 4 cylinder diesel 63 hp (47 kW)<br>Continental TME27 4 cylinder gas/LPG 74 hp (55 kW) |       |
| Auxiliary power unit                  | 12 V DC   |       |
| Hydraulic tank capacity               | 45 gal  | 170 L |
| Fuel tank capacity – diesel machines  | 35 gal  | 132 L |
| Fuel tank capacity – gas/LPG machines | 30 gal  | 114 L |

### Weight\*\*\*\*

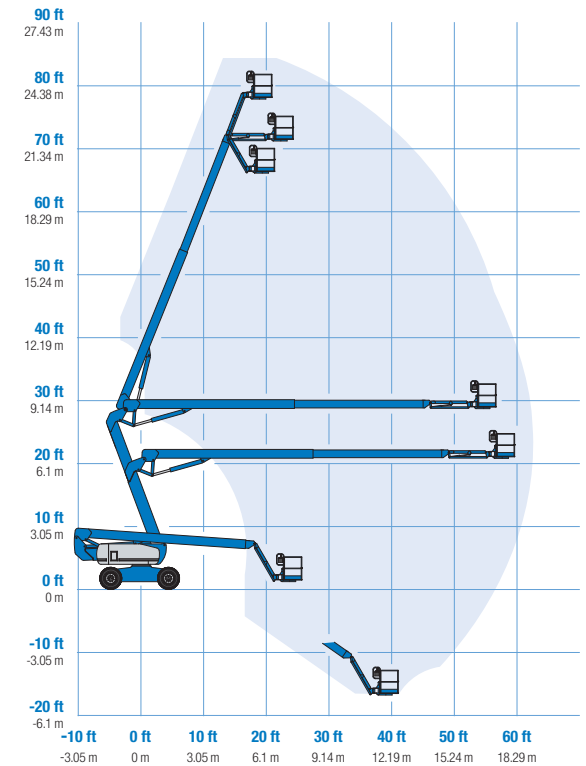
|     |            |           |
|-----|------------|-----------|
| 2WS | 35,900 lbs | 16,284 kg |
| 4WS | 37,500 lbs | 17,010 kg |

### Standards Compliance

«ANSI A92.5, CSA B354.4, EN 280, AS 1418.10



### Range Of Motion Z-80/60



\* The metric equivalent of working height adds 2 m to platform height. U.S. adds 6 ft to platform height.

\*\* In lift mode (platform raised), the machine is designed to operate on firm, level surfaces only.

\*\*\* Gradeability applies to driving on slopes. See operator's manual for details regarding slope ratings.

\*\*\*\* Weight will vary depending on options and/or country standards.

## Features

### Standard Features

#### Measurements

- 84 ft (25.77 m) working height
- 60 ft (18.28 m) horizontal reach
- 29 ft (8.83 m) up and over clearance
- Up to 500 lbs (227 kg) lift capacity

#### Productivity

- 6 ft (1.83 m) jib with 135° range
- Self-leveling platform
- Hydraulic platform rotation
- Fully proportional Hall effect controls
- On board diagnostics
- ALC 1000 electronic control system
- Hydraulic oil cooler
- Drive enable
- AC power cord to platform
- Horn
- Hour meter
- Tilt alarm
- Descent alarm
- 360° continuous turntable rotation
- Locking turntable covers
- Full-time positive traction drive
- Two speed wheel motors
- Four steering modes: front, rear, crab and coordinated
- Configurable controls to limit lift height to 70 ft

#### Power

- 12 V DC auxiliary power
- Anti-restart engine protection
- Auto engine fault shutdown
- Engine monitoring display
- Block heater (Continental engine)
- Dual battery
- Engine status display

### Easily Configured To Meet Your Needs

#### Platform Options

- Steel 8 ft (2.44 m) (standard)
- Steel 6 ft (1.83 m)
- 8 ft (2.44 m) tri-entry

#### Jib

- 6 ft (1.83 m) jib boom

#### Engine Options

- Deutz diesel 74 hp (55 kW)
- Perkins diesel 63 hp (47 kW)
- Continental gas/LPG 74 hp (55 kW)

#### Drive/Steer Options

- 4WD (standard)
- 2WS (standard)
- 4WS

#### Axle

- Active oscillation

#### Tire Options

- Rough terrain foam-filled (standard)
- Rough terrain non-marking foam-filled
- High flotation rough terrain



### Options & Accessories

#### Productivity Options

- Platform swing gate
- Half-mesh platform inserts with swing gate
- Platform top auxiliary rail
- Arc Pro 275™ Heavy-Duty Welder package
- Welder Ready package
- Weld leads to platform
- Air line to platform
- Biodegradable hydraulic oil
- Hostile environment package
- Deluxe hostile environment package
- Thumb rocker steer
- Aircraft protection package (6 ft platform only)
- Tool tray
- Pipe cradles (pair)
- Alarm package
- Lockable platform control box covers
- Work light package

#### Power Options

- AC generator packages (110V/60Hz - 220V/50Hz, 3000W)
- Cold Weather Packages
- Diesel scrubber/spark arrestor (catalytic muffler)
- LPG tank only, steel, 33.5 lbs (15.19 kg) capacity

### Genie United States

18340 NE 76th Street  
P.O. Box 97030  
Redmond, Washington 98073-9730  
Telephone +1 (425) 881-1800  
Toll Free in USA/Canada +1 (800)-536-1800  
Fax +1 (425) 883-3475

### Genie Europe

The Maltings  
Wharf Road  
Grantham NG31 6BH  
UK  
Telephone +44 (0)1476 584333  
Fax +44 (0)1476 584334  
Email: AWP-InfoEurope@terex.com

### Distributed By: